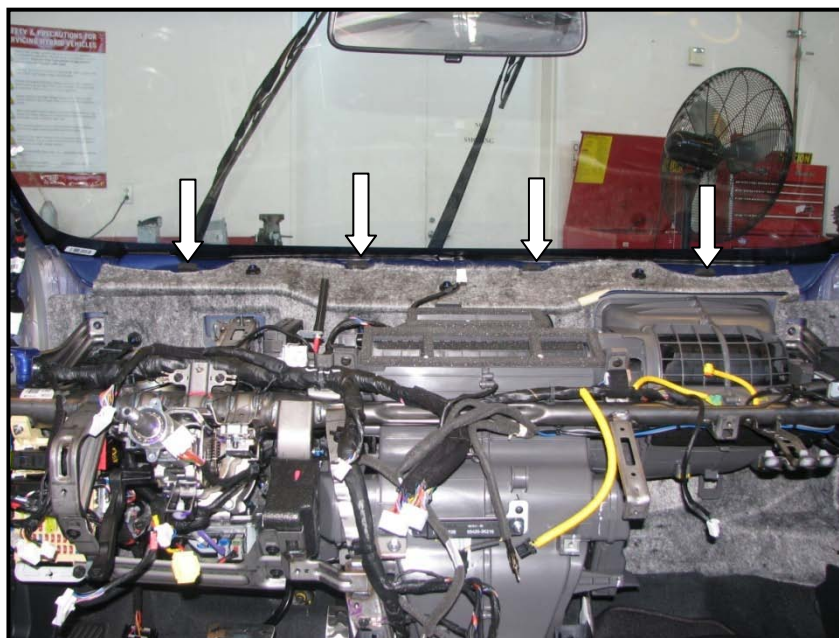
	GROUP <b>Body</b>	MODEL <b>2012MY Rio (UB)</b>
	NUMBER <b>086</b>	DATE <b>December 2011</b>
<b>TECHNICAL SERVICE BULLETIN</b>		
<b>SUBJECT: RIO (UB) INSTRUMENT PANEL PAD NOISE REPAIR</b>		

This bulletin provides information related to Rio (UB) vehicles produced from Start of production to November 11, 2011 that may experience a squeaking, rubbing or creaking noise emitting from the upper instrument panel pad area during normal driving conditions or while going over bumps or rough roads. These noises may be more prevalent during colder temperatures. To repair this condition, perform the following procedure outlined in this TSB.



Instrument panel pad contact tabs (arrows) will require a felt type insulation material applied to each of the four (4) tabs.

**File Under: <Body>**

---

Circulate To:    ☒ General Manager    ☒ Service Manager    ☒ Parts Manager  
                          ☒ Service Advisor(s)    ☒ Technician(s)    ☒ Body Shop Manager    ☒ Fleet Repair

**Service Procedure:**

1. Test drive vehicle to verify that there is a squeaking or similar noise emitting from the upper instrument panel pad area.

These noises may be more prevalent in colder temperatures, during turns and driving over rough road conditions.

2. Follow the procedure outlined on KGIS for removal of the dash assembly.

Record customers radio presets before disconnecting the battery.

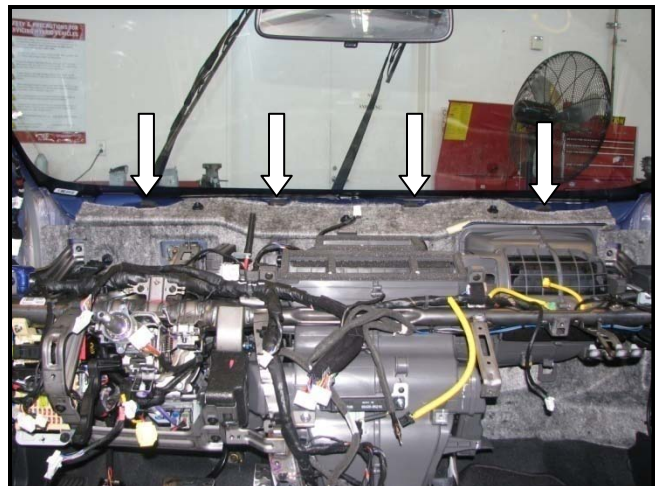
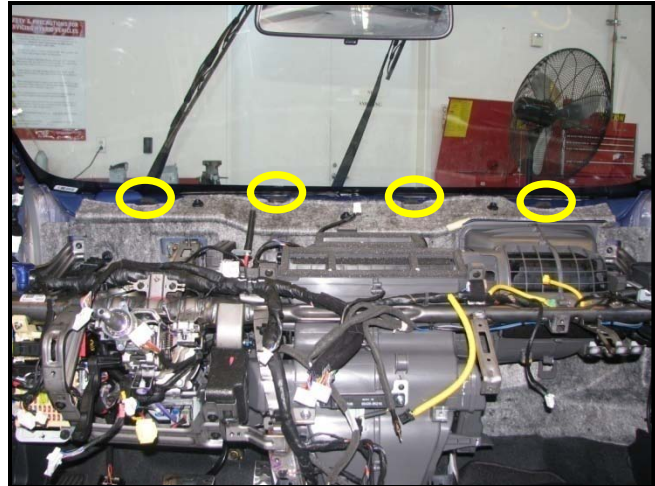
Instrument panel pad assembly is shown removed (photo on the right) to allow access to the four (4) dash contact tabs as indicated in the circle.

**CAUTION**

**Follow all the cautions outlined in the instrument panel pad removal Service Procedure.**

**Disconnect the negative battery terminal before removal of the dash assembly and related components.**

3. Locate the four (4) contact tabs (arrows) after instrument panel pad assembly has been removed.

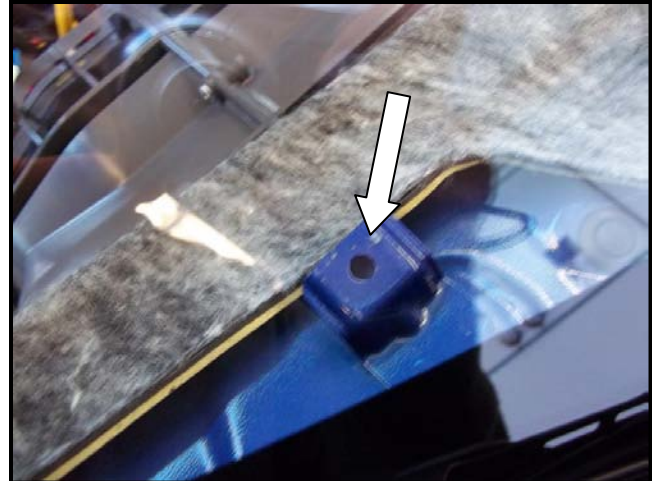


**SUBJECT:** RIO (UB) INSTRUMENT PANEL PAD NOISE REPAIR

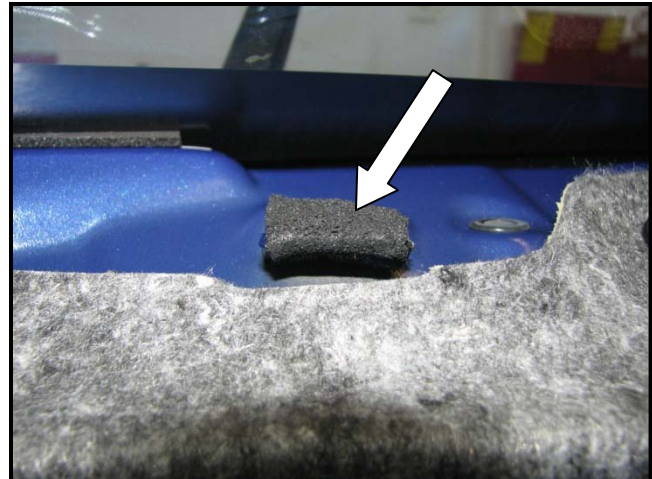
4. Apply a felt type insulating material to each of the four (4) contact tabs.

**★ NOTICE**

Use suitable insulating material such as felt or closed cell foam that can be obtained via a local supply source.

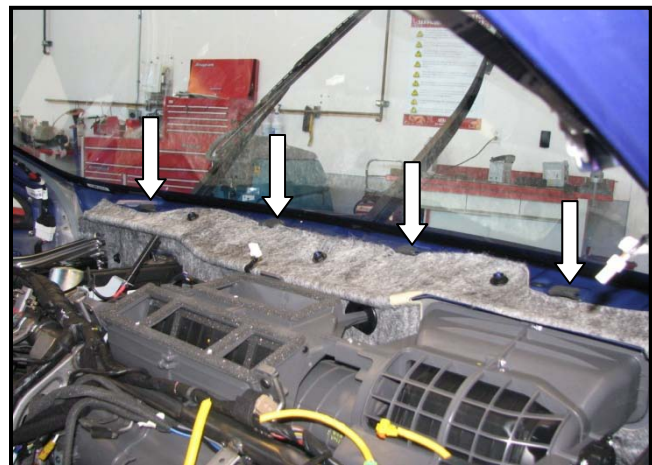


5. Close-up view of insulating material applied to instrument panel pad contact tab.



6. After applying the insulating material to each of four (4) tabs, install instrument panel pad assembly in reverse order of removal as per KGIS procedure.

Reconnect the negative battery terminal, and then reprogram the radio stations with customer presets.



7. Test drive vehicle to ensure the instrument panel pad related noise concern has been corrected.

**SUBJECT:**

RIO (UB) INSTRUMENT PANEL PAD NOISE REPAIR

## AFFECTED VEHICLE PRODUCTION RANGE:

Model	Production Date Range
Rio (UB)	Start of production to November 18, 2011

## REQUIRED PART:

Suitable insulating material such as felt or closed cell foam can be obtained via a local supply source.

## WARRANTY CLAIM INFORMATION:

Claim Type	Causal P/N	Qty.	N Code	C Code	Repair Description	Labor Op Code	Op Time	Replacement P/N	Qty.
W	84710 1W100HU	0	N29	C09	(BOD 086) Instrument Panel Pad Noise Repair	84710R00	2.9 M/H	NPNOTHER	1

Note: Felt tape expense is covered under the NPNOTHER part number for \$5.00